



Remote Sensing Metrics LLC

Buckeye Bahamas Hub
2019-09-05

TABLE OF CONTENTS

Pre-Hurricane Image

Post-Hurricane Image

Zones

Berths, Jetties, and Tanks

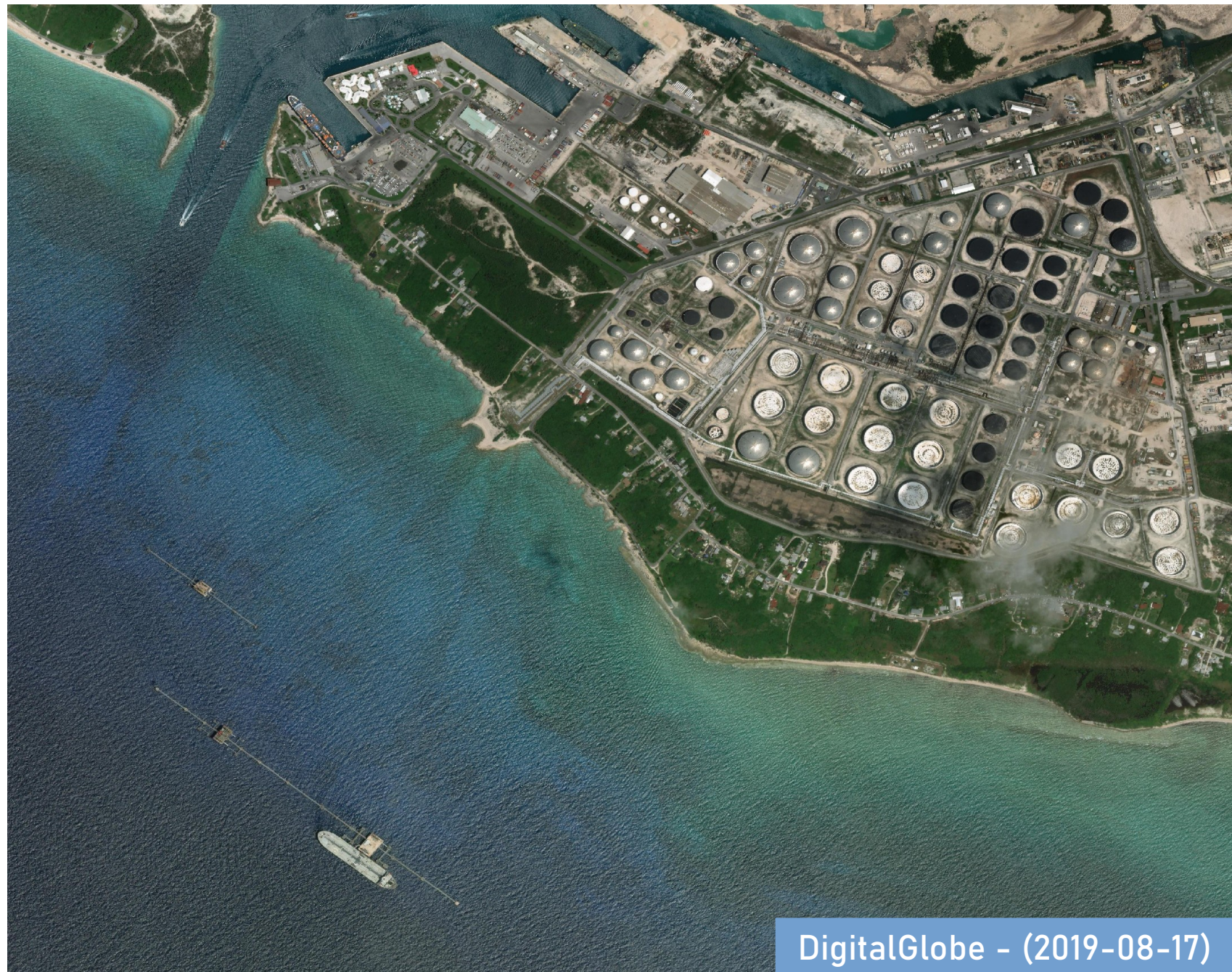
Ships and Vehicles

Roof Damage

Site Flooding

Assessment Criteria

Buckeye Bahamas Hub | Pre-Hurricane



DigitalGlobe - (2019-08-17)

Buckeye Bahamas Hub | Post-Hurricane



Airbus - (2019-09-05)

Zones



Berths, Jetties, and Tanks



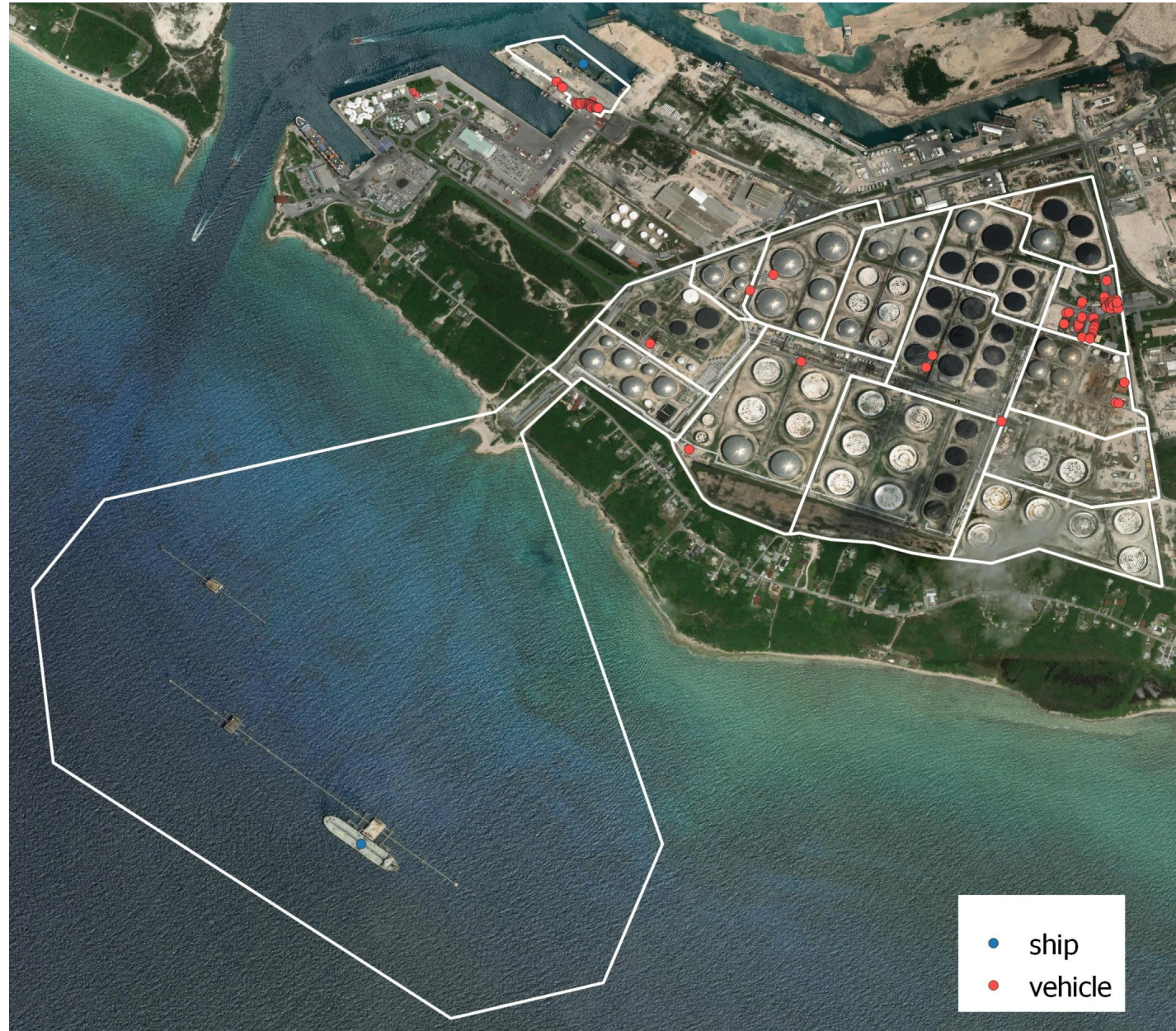
Berths, Jetties, and Tanks



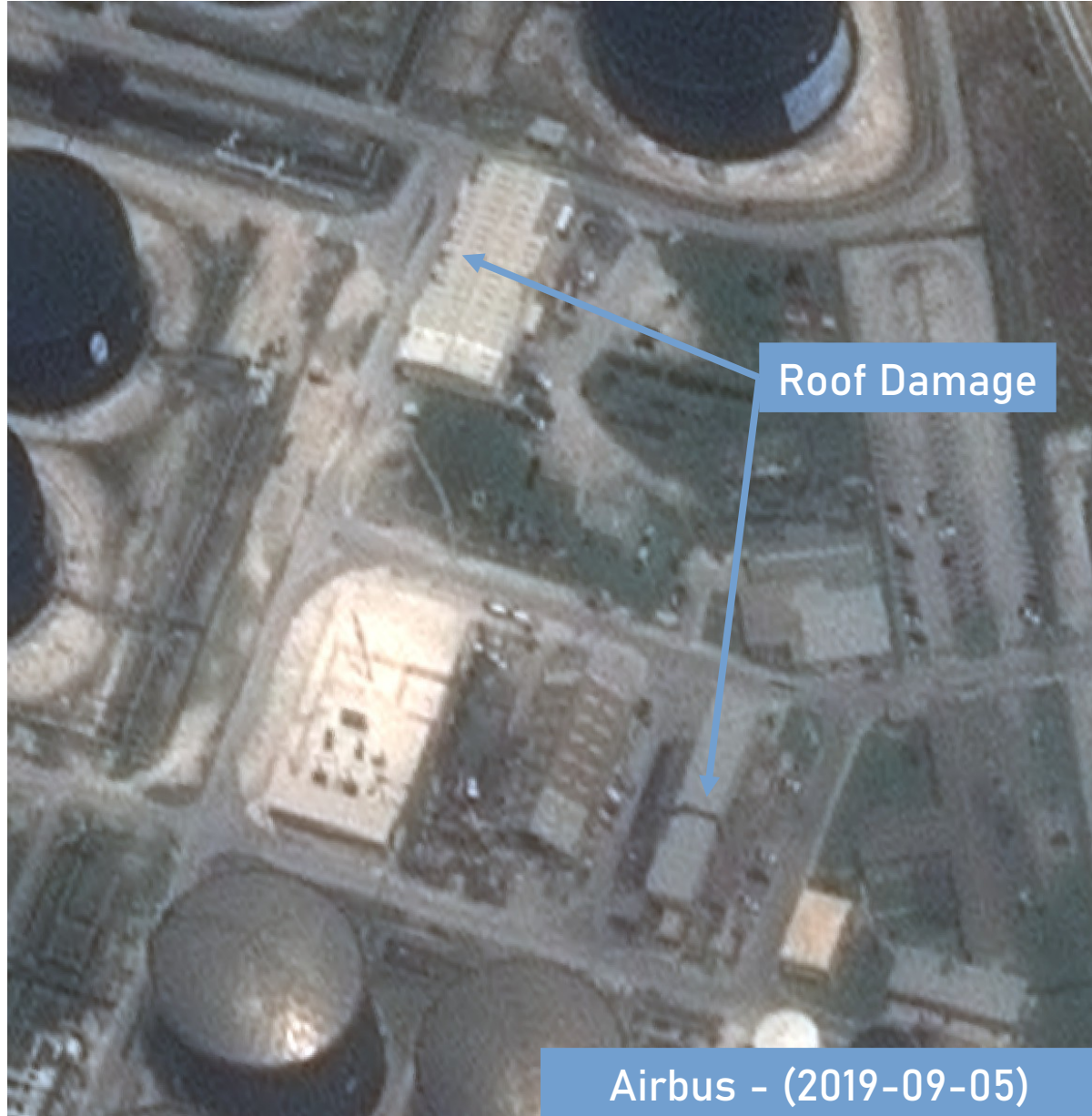
Berths, Jetties, and Tanks



Ships and Vehicles



Roof Damage



Site Flooding



Site Flooding



Assessment Criteria

- **Tanks**

- Smoke and/or fire
- Oil on ground
- Structural damage
- Missing covers or tops for Fixed Top tanks
- Oil above Floating Top tanks
- Debris around tank obviously from tank
- Displacement of entire structure

- **Jetties / Berths**

- Smoke and/or fire
- Oil in water
- Structural Damage
- Debris in water obviously from jetty
- Displacement of entire jetty
-

- **Construction Materials**

- New materials and associated equipment being brought to the site

- **Pipelines**

- Smoke and/or fire
- Oil on ground or pipes
- Structural damage
- Debris around pipe obviously from pipe
- Oil seeping into water (submarine pipes)
- Displacement of pipe

- **Vehicles**

- Count of employee cars
- Additional vehicles such as

- **Ships**

- Count of ships



Contact us for more information

Remote Sensing Metrics, LLC
www.rsmetrics.com

New York:

Maneesh Sagar, CEO
646-504-7594
msagar@rsmetrics.com

Chicago:

Tom Diamond, President
312-282-4600
tdiamond@rsmetrics.com